

Christopher Hodgson

ESTATE AGENTS . AUCTIONEERS & VALUERS



Tankerton, Whitstable

Guide Price **£495,000** Freehold

...for Coastal, Country & City living.



• 95/97 Tankerton Road . Whitstable . Kent CT5 2AJ . t: 01227 266441 . f: 01227 266443
e: sales@christopherhodgson.co.uk, lettings@christopherhodgson.co.uk . www.christopherhodgson.co.uk

Estate agency services are provided by Christopher Hodgson Limited, a company incorporated and registered in England and Wales with the number 07108955 whose registered office address is at Camburgh House, 27 New Dover Road, Canterbury, Kent CT1 3DN. Lettings and valuations are provided by Christopher Hodgson and Helen Hodgson trading as Christopher Hodgson.

Tankerton, Whitstable

32 Southwood Road, Tankerton, Whitstable, Kent, CT5 2PW

An opportunity to acquire a generously proportioned bungalow in a desirable Tankerton location close to shops, schools, bus routes, railway stations and less than a mile from Tankerton slopes and seafront.

The spacious accommodation is arranged to provide an entrance hall, sitting room, kitchen/dining room overlooking the rear garden, a conservatory, two double bedrooms, a bathroom and a separate cloakroom. The property would now benefit from a degree of updating and improvement throughout, and offers considerable scope to extend and remodel (subject to all necessary consents and approvals being obtained).

The generous rear garden extends to 63ft (19m). An attached single garage and driveway provide off road parking for a number of vehicles.

No onward chain.



Location

Southwood Road is situated in a much sought after location, conveniently positioned for access to shops and amenities on Tankerton Road and is within close proximity to Tankerton slopes and seafront, bus routes, schools and mainline railway stations offering frequent services to London (Victoria) approximately 80mins. The high speed Javelin service provides access to London (St Pancras) with a journey time of approximately 73mins. Whitstable is less than 1 mile distant with its bustling High Street providing a diverse range of shopping facilities as well as fashionable restaurants, recreational and leisure amenities. The A299 is accessible providing a dual carriageway link to the M2/A2 connecting motorway network.

Accommodation

The accommodation and approximate measurements are:

GROUND FLOOR

• Entrance Hall

10'4" x 3'1" (3.15m x 0.94m)
at maximum points.

• Sitting Room

15'8" x 11'5" (4.78m x 3.48m)
at maximum points.

• Kitchen

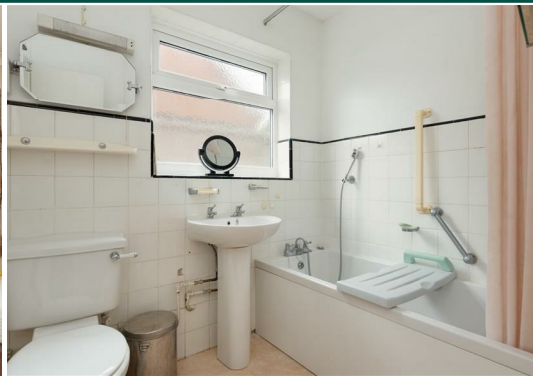
13'9" x 11'8" (4.20m x 3.55m)
at maximum points.

• Conservatory

13'9" x 4'11" (4.19m x 1.50m)
at maximum points.

• Cloakroom

5'6" x 3' (1.68m x 0.91m)
at maximum points.



• **Bedroom 1**

13'3" x 10'5" (4.03m x 3.18m)
at maximum points.

• **Bedroom 2**

13'4" x 12'4" (4.07m x 3.76m)
at maximum points.

• **Bathroom**

7'0" x 5'7" (2.14m x 1.69m)
at maximum points.

OUTSIDE

• **Garage**

17'2" x 8'6" (5.22m x 2.60m)
at maximum points.

• **Garden**

63' x 42' (19.20m x 12.80m)
at maximum points.

Video Tour

Please view the video tour for this property, and contact us to discuss arranging a viewing.



Ground Floor

Approx. 97.9 sq. metres (1054.2 sq. feet)



Total area: approx. 97.9 sq. metres (1054.2 sq. feet)

Council Tax Band D. The amount payable under tax band D for the year 2022/2023 is £1,997.91.

Viewing: STRICTLY BY APPOINTMENT WITH AGENTS . t: 01227 266441

Christopher Hodgson Estate Agents for itself and as for the vendor or lessor (as appropriate) gives notice that: 1 These particulars are only a general outline for the guidance of intending purchasers or lessees and do not constitute in whole or in part an offer or a Contract. 2 Reasonable endeavours have been made to ensure that the information given in these particulars is materially correct but any intending purchaser or lessee should satisfy themselves by inspection, searches, enquiries and survey as to the correctness of each statement. 3 All statements in these particulars are made without responsibility on the part of Christopher Hodgson Estate Agents or the vendor or lessor. 4 No statement in these particulars is to be relied upon as a statement or representation of fact. 5 Neither Christopher Hodgson Estate Agents nor anyone in its employment or acting on its behalf has authority to make any representation or warranty in relation to this property. 6 Nothing in these particulars shall be deemed to be a statement that the property is in good repair or condition or otherwise nor that any services or facilities are in good working order. 7 Photographs may show only certain parts and aspects of the property at the time when the photographs were taken and you should rely upon actual inspection. 8 No assumption should be made in respect of parts of the property not shown in photographs. 9 Any areas, measurements or distances are only approximate. 10 Any reference to alterations or use is not intended to be a statement that any necessary planning, building regulation, listed building or any other consent has been obtained. 11 Amounts quoted are exclusive of VAT if applicable. 12 Whilst reasonable endeavours have been made to ensure the accuracy of any floor plan contained in these particulars, all measurements and areas are approximate and no responsibility is taken for any error, omission or mis-statement. This plan is for illustrative purposes only and should be used as such by any prospective purchaser. 13 Any mapping contained within these particulars is for illustrative purposes only and should be used as such by any prospective purchaser. No responsibility is taken for any error, omission or mis-statement. 14 Any computer generated images contained within these particulars are for illustrative purposes only and should be used as such by any prospective purchaser.

Part	Energy Efficiency	Environmental Impact
Overall	E	51
Living Room	C	65
Kitchen	C	65
Bedroom 1	D	55
Bedroom 2	D	55
Bathroom	D	55
Conservatory	F	35
Garage	F	35